



Navigating Ontario's Healthcare Maze: How Community HealthPathways will simplify care across Greater Hamilton, Burlington, and Middlesex London

Heather Shaw, GHHN Manager

Integrated Health Pathways and System Navigation

For many clinicians, Ontario's healthcare system feels like a maze — with siloed services, unclear referral pathways, and growing administrative demands. It can be difficult to know where to send patients, how to access local supports, or even what's available.

That's why the Burlington Ontario Health Team (BOHT), Middlesex London OHT (MLOHT), and Greater Hamilton Health Network (GHHN) collaborated to launch Community HealthPathways, a digital platform designed to simplify navigation and improve care coordination across the system.

A Smarter Way to Navigate Care

Community HealthPathways is a web-based tool that gives primary care providers, nurse practitioners, and other healthcare clinicians quick access to evidence-based clinical pathways and local referral options all in one place. It supports real-time decision-making at the point of care, helping providers make confident, timely referrals that improve patient outcomes.

Providers can search by condition to find best-practice management advice, relevant referral processes, and local service details. While the platform is expected to offer access to over seven hundred clinical pathways at maturation, we're beginning with 40+ localized pathways that launched in June 2025. This phased rollout will position Community HealthPathways as a key enabler of integrated care as it continues to grow and evolve.

“

At its core, HealthPathways is about bridging the gap between primary and specialty care...laying the groundwork for a more connected, coordinated future.

- Heather Shaw



Built for Better Collaboration

At its core, HealthPathways is about bridging the gap between primary and specialty care. Through locally developed shared care agreements, clinicians across the region are co-designing pathways that reflect the realities and resources of their communities.

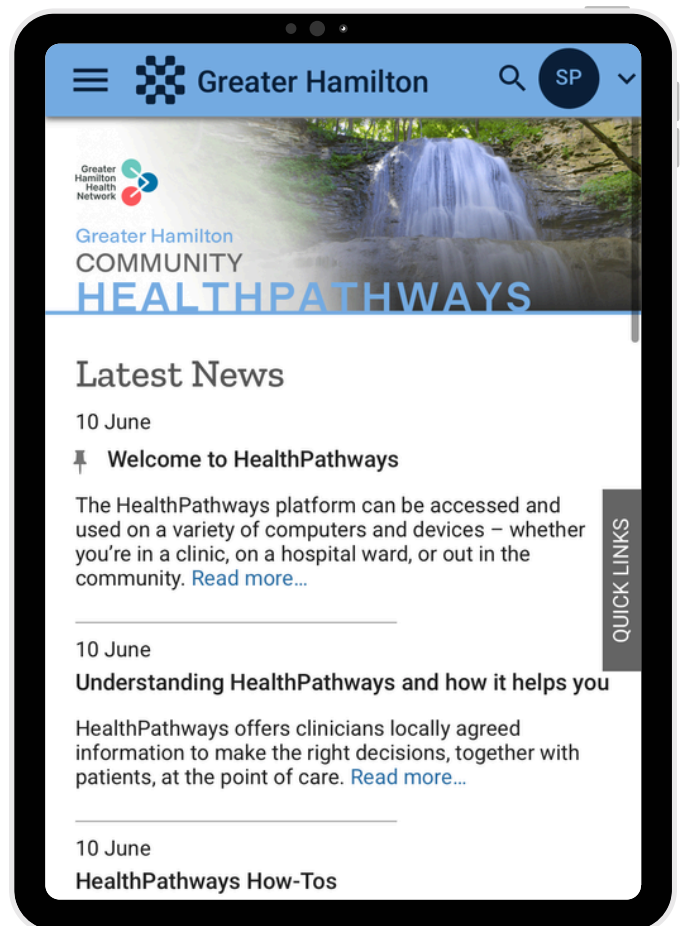
These pathways go beyond national guidelines they are customized to local contexts, ensuring a more consistent, coordinated experience for patients no matter where they enter the system.

Cutting through the Admin Chaos

Community HealthPathways is also being built with the clinician experience in mind. By reducing administrative complexity, streamlining referrals, and integrating workflows, it saves time and cuts through red tape.

The result? Less time on paperwork. More time with patients.

At the system level, this approach supports broader health goals including the Quintuple Aim: improving patient and provider experience, advancing health equity, optimizing resources, and improving population health.



A Better Future for Ontario's Healthcare

As Ontario's healthcare system continues to evolve, Community HealthPathways is laying the groundwork for a more connected, coordinated future.

By empowering shared decision-making, streamlining care, and strengthening local partnerships, it's more than a digital tool it's a more connected, unified way to deliver care—and as the platform grows, so too does its potential to transform how we work, refer, and care together.

Sign up Today!

To learn more or sign up for this free resource in your region please visit:
<https://linktr.ee/ohthealthpathways>

